

KRYCELL SNOW WASH

The wash is designed to make instant snow cover, to create fine- small amounts of snow effect which can be increased by adding further coats. It is better if the wash is allowed to dry between adding more.

In this picture on the right(**1/35th scale**) three coats have been used. The effect is see through and realistic.

The wash is not overpowering and even with three coats it produces amazing detailed and realistic snowfall results. Simply let it dry between coats to see the result before putting on more.

If the model is tilted while drying takes place, angled snowfall can be represented very easily and realistically.

“For thin coats, use a damp sponge to remove it, as it is applied to get clear areas between equipment and details.”

The wash is not designed to be used as a snow paint.

The wash is designed to collect in small areas, or to build up thinly over flat surfaces.

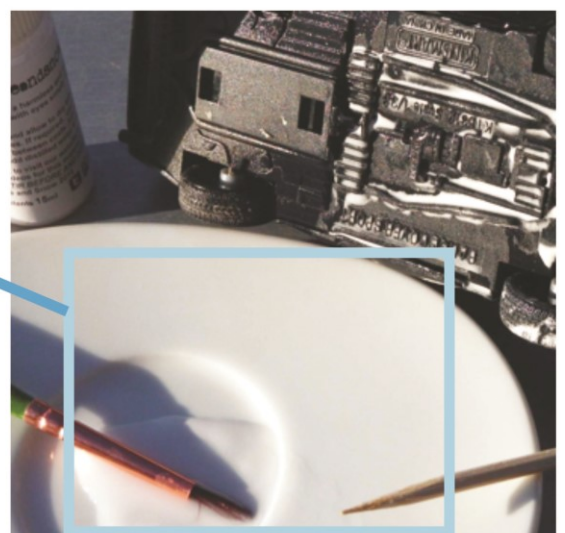
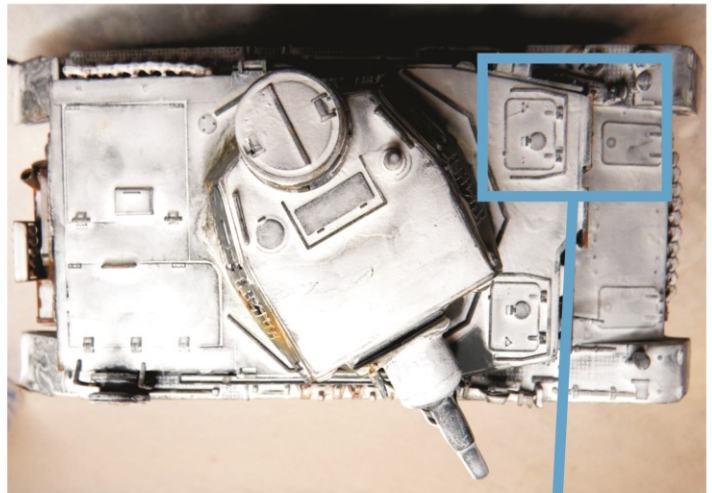
The wash will give the effects of snow that has been blown into small areas and has collected, or snow that is spread thinly over surface areas.

USING THE WASH

Shake the wash in the bottle, then put a little into a dish or saucer. Add a small amount of powder to increase the effect or water to thin the wash.

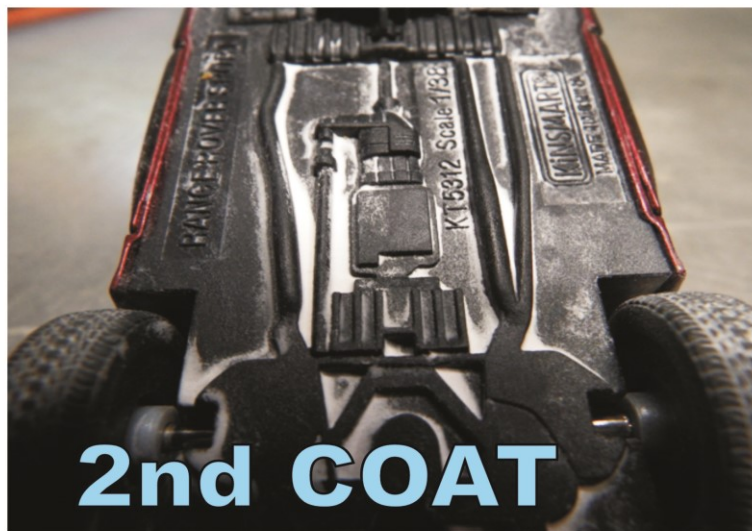
Apply the wash with;

- 1/ A thin detail brush for small wash area
- 2/ A bigger soft brush for larger wash area
- 3/ A thin wooden, or plastic splint, or stick for small detailed areas.



Put the wash onto the area to create a light snow effect. The wash will spread out into the detail and over the raised surfaces.

If you put your model to dry at an angle, the wash will dry at an angle also. This way, you can easily recreate the look of drifting and wind blown snow.



Use a hair dryer or put the model in a warm place to speed drying between coats

The wash can be wiped into place using a damp, fine sponge or cloth.
Also the wash can be softened when dry and adjusted to leave snow free areas
Notice how the particles of snow have been trapped in the tyre treads.



MAKING THE WASH MORE DURABLE



The wash is stable when it has been applied and will not fall or brush off. However, if the work is going to be handled it is a good idea to make it permanent. Simply spray the work with a clear matte acrylic lacquer when the wash has dried using an airbrush, or an aerosol can of acrylic matte lacquer



The difference in the appearance of our Wash or snow effects can be seen in these two images.

- 1 without lacquer
- 2 with lacquer



