

# INSTA-SNO

**INSTA-SNO** is an model scenic snow material which can be used for creating snow effects to the bases of scale models. It sets very hard and is durable.

It is available in three types- **FINE**, **EXTRA** and **ULTRA**

**EXTRA** is for scales 1:35th and bigger.. **FINE** is for 1:35th and smaller. **ULTRA** can be used on all scales. However, you can use whatever you want depending on how much obvious sparkle and size of snow particle you need. Insta-Sno is water soluble and can be thinned in the jar if it becomes too dry,



**INSTA-SNO** is used straight out of the jar to produce instant snow effects for figures, vignettes and dioramas.

When set, it is very hard, dust and powder free.

Also light and colours can be seen through it just like real snow.



Use a plastic spatula, or similar tool to create a textured snow surface.

Working at room temperature you will have plenty of time before the material hardens.

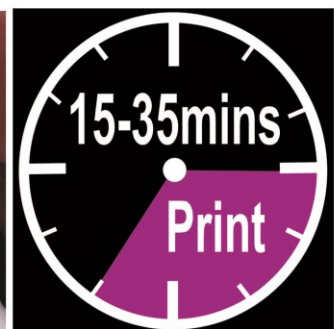
Insta -Sno will remain workable for 45-60 minutes at room temperature.

It is best if the surface is painted matte, or is not too smooth, so that the Insta-Sno can get a good grip.

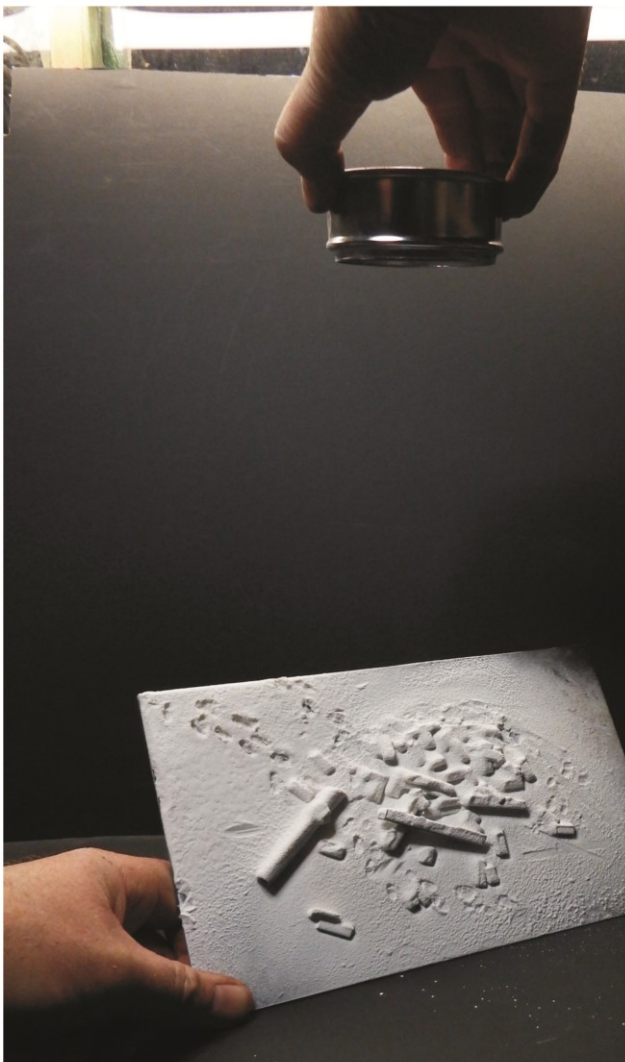
If needed, make the surface rough with wire wool, or sandpaper.

## **Making tracks and prints**

Insta-Sno will form a skin on the top before it is completely dry. During this time prints and tracks can be made by pressing objects into it. Depending on how thick the coating of Insta-sno is and the temperature there are different timings for this, but generally between 15 and 35 are the usual times. However, as conditions can vary, it is best if the surface is tested as it dries. You can experiment first with scrap materials. To try out this technique.



If the snow is too sticky, try spraying or soaking some tissue or cloth in a little light oil. (**Other light oils may work well but it is important to experiment first.**) Press the object onto the tissue or cloth. When you have done this you can create your prints. Wipe the object clean between printing and re-apply the oil. Remember, a dusting of powder will work too, to stop sticking so you can make tracks and prints.



Wait for about for some time depending on the thickness and wetness of the snow you have made and then apply a thin coat of powder over the wet snow with a sieve.

Then use an object to make the prints. . When the Insta-Sno has dried, the spare powder can be blown, or tapped off to ghet the excellent effects show here



# MAKING YOUR INSTA-SNO SUPER PERMANENT AND WATERPROOF



When the Insta-Sno has dried completely you can make it super durable and waterproof.

Use a can of clear matte acrylic lacquer, or use an airbrush to soak it in a clear matte lacquer. The dry Insta-Sno will absorb the lacquer and will bond it tightly to any board or surface.

Soaking the cured Insta-Sno like this will make it waterproof, washable and permanent for wargaming and when figures are going to be handled.

Simply spray the completed base with a clear acrylic matte lacquer. This can be from an aerosol can, or through an airbrush. It is important that the lacquer is not just sprayed onto the surface, but is allowed to soak through the dry Insta-Sno so that the base is completely bonded together.

Use enough spray so that the snow is completely penetrated by the lacquer. The dry snow will suck in the thin lacquer.

It is easy to put grasses or foliage into the instant snow before it dries.

The dried grass does not need an adhesive when placed into the **Insta-Sno**. Just let it dry slowly.

There is no need to use an additional adhesive when putting scenic effects into the prepared snow base.. Below we see crisp snow, snow with winter grasses and footprints where we can see the colours showing through from underneath.

